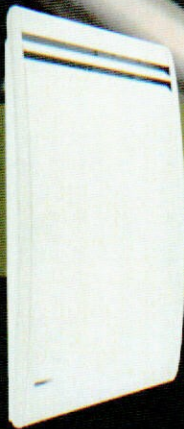




Allegro 26



CONVECTAIR

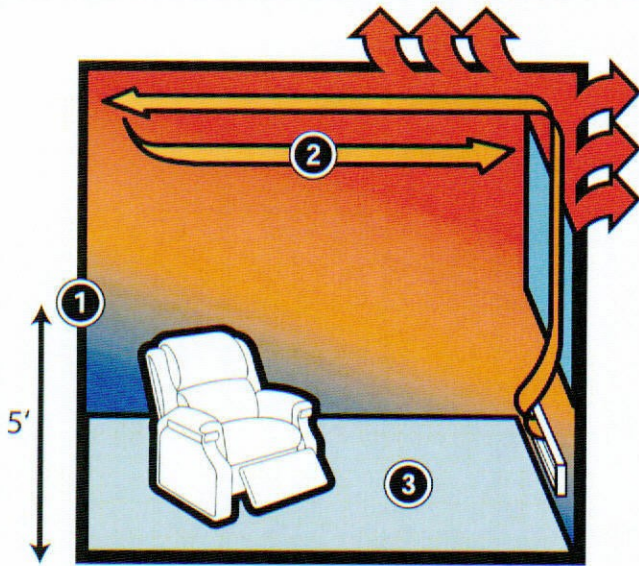
FEATURES

- 500 to 2000 watts
- Natural convection
- White or mimetic white
- Can receive the Programmer

ADVANTAGES

- Narrow heater
- Totally silent
- More available wall space
- Energy efficiency

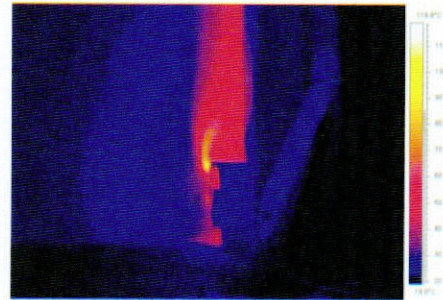
BASEBOARD PERFORMANCE



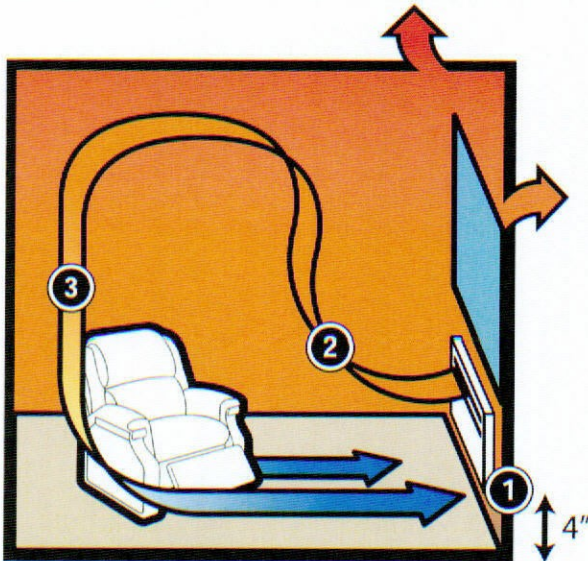
- 1 Thermostat **detects cold air** at 5 feet from floor level, allowing rooms to cool down and requiring heaters to overwork.
- 2 Hot air is distributed vertically along exterior walls, **accumulating** at the ceiling. Higher amount of **heat loss** through walls and windows, **unavoidable**.
- 3 Floors and room extremities remain **cold**.

BASEBOARD THERMOGRAPHY

Heat comes out at 60°C and is distributed vertically.



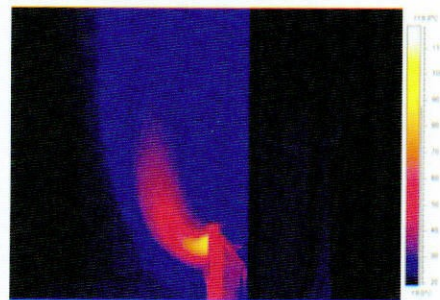
CONVECTAIR PERFORMANCE



- 1 **Monitors** and addresses cold air at 4 inches from floor level, maintaining a consistent heat.
- 2 Warmed air is **directed** towards the **center of the room**, mixing quickly with the ambient air.
- 3 **Temperature** is **consistent** throughout the entire room, eliminating cold spots.

CONVECTAIR HEATER THERMOGRAPHY

Heat comes out at 100°C and is directed towards the center of the room, mixing quickly with the ambient air.



CONVECTAIR

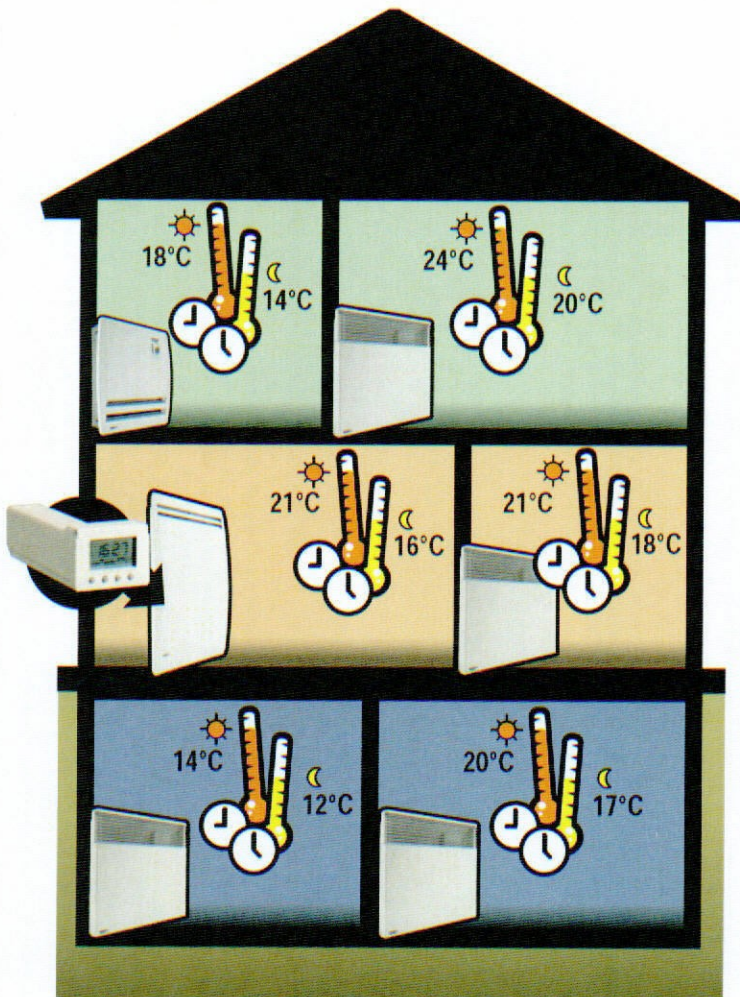
COMFORT EXPLAINED

AUTOMATIC SETBACKS AND ENERGY SAVINGS WITH CONVECTAIR'S PROGRAMMER SYSTEM



THE PROGRAMMER...

Controls all linked heaters from a central point.
Can be **customized** to meet your schedule.
Saves energy without compromising comfort.

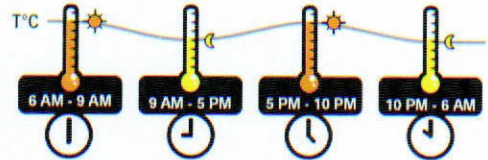


1



The Programmer is inserted in a compatible heater and can **control** up to **20 Convectair heaters**.

2



The Programmer acts as a **clock**.
It automatically **lowers the temperature** in desired rooms.

3



Comfort setting
People are in the house.



Setback setting
People are out of the house or sleeping.

Comfort and setback settings are **adjusted directly on the heater**. They can vary from room to room.*

* Bathroom heaters are programmed for setbacks of 3,5°C.



CONVECTAIR

COMFORT EXPLAINED